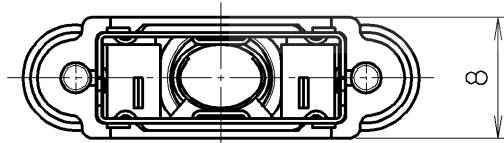


Connector (Note. #1)
 HDR-E26F () G () +
 HDR-E26M () G () +

After assembly drawing



Note

1. Connector is not included in P/N: HDR-E26LPH1.
2. This drawing shows assembled for reference. Thumb screws are assembled to plastic cover. Inner shell A and B are supplied unassembled.

掲載している製品の特性及び仕様は参考値です。この製品は予告なく変更する場合があります。お問い合わせの際は、必ず当社担当窓口までお問い合わせをお願いします。
 The product information in this data is for reference only. This is subject to change without notice. Please request Engineering Drawing for the most current and accurate design information.
HTK

					4	Thumb screw	Stainless steel	2			
△3					3	Inner shell A	Stainless steel	1	Nickel plating		
△2					2	Inner shell B	Stainless steel	1	Nickel plating		
△1	Apr. 24, 2009	H. A.	Revised.		1	Plastic cover	ABS alloy	1		UL94V-0 Black	
LTR.	DATE	BY	REV.	DESCRIPT	No.	PART NAME	MATERIAL	QTY	FINISH	NOTE	
DATE		SCALE		UNIT		3RD. A. P		HONDA TSUSHIN KOGYO CO., LTD.			
May. 23, 2005		2 / 1		mm (INCH)							
APP. DATE&REV.		DR.		DE.		CHK.		CHK.		APP.	
		H. AIZAWA		H. AIZAWA		K. TAKAHASHI		—		K. KASAI	
		NAME		HDR-E type cable cover (RoHS)		PART NO.		HDR-E26LPH1		REV. 1 A	